

# New York family

July 2008

## BROOKLYN

July 2008

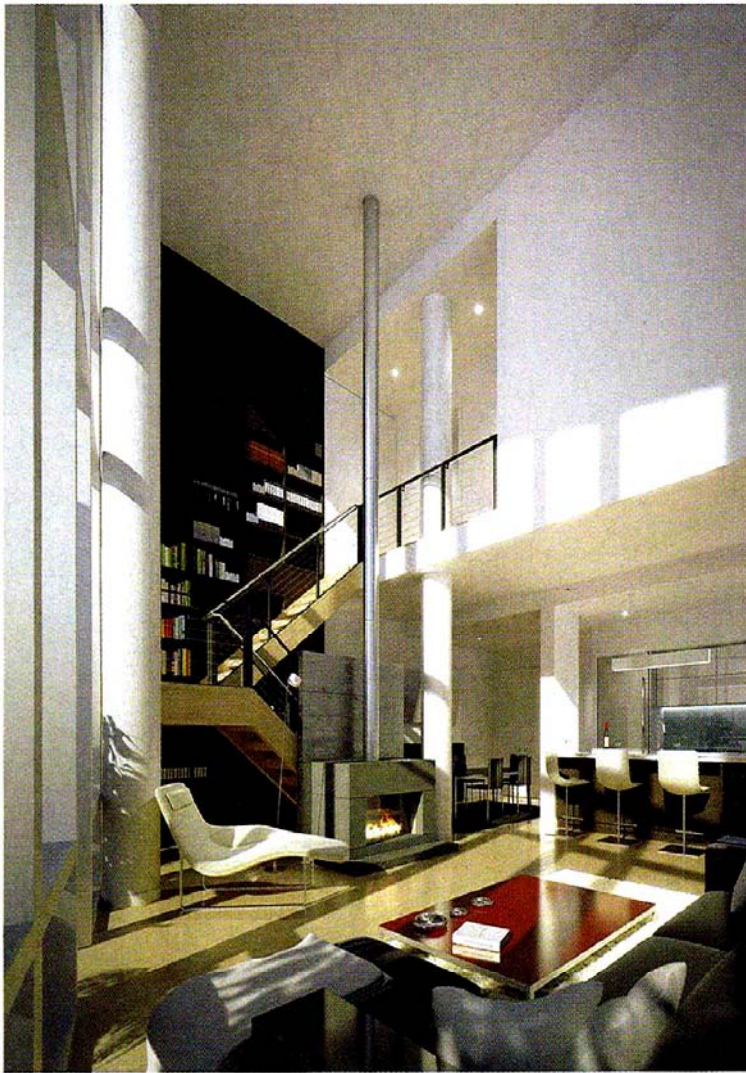
## Dream Buildings



Get Ready  
To Discover  
Some Of  
The Best  
Family-Friendly  
Buildings In  
New York City...



Clockwise from top:  
Peter Cooper Village,  
Warehouse 11,  
One Hanson Place,  
and The Edge



ties, including BBQ facilities; a fire pit; hot tub and open-air pool; yoga studio and fitness center; spa facility; theatre screening rooms; children's playroom, video game, and party room, as well as a lounge with demonstration kitchens and billiards tables. A valet parking garage also holds up to 700 cars.

Eco-conscious families will love that the building is striving for LEED Silver Certification, as a high percentage of its construction is made from recycled materials and finishes, and features filtered air, open kitchens with sustainably harvested wood cabinetry and floors, and energy-saving appliances. Most of the homes feature outdoor terraces or glass-enclosed balconies with spectacular Manhattan views. Families can choose from studios up to 570 square feet, one- and two-bedrooms or three-bedroom penthouses that feature up to 2,879 square feet.

With the revitalization of Williamsburg in full swing, The Edge offers perhaps the most ambitious project to date. "Williamsburg has the distinct advantage of being a family neighborhood for the last 100 years," says Levine. "The fact that it was of a pre-existing residential nature in the community enabled the neighborhood to then re-invent itself to the new generation."

Young families can now enjoy the new waterfront community with Bedford Avenue's shops, galleries, restaurants and grocery stores, in addition to the L train stop to Manhattan, only three blocks away. "The Edge offers you the opportunity to have the best of both worlds," says Levine. "It offers views and comforts, without losing the advantage of having a neighborhood at your doorstep."—Celene McDermott

## The Edge

The Brooklyn skyline will be forever changed with the opening of The Edge, a new luxury high-rise development in Williamsburg. Featuring more than 1,000 eco-friendly condominium units on 7.5 acres of waterfront, families will have an additional 1.5 acres of outdoor space, complete with a promenade, jogging and bicycle paths, and even a proposed water taxi stop right in their backyard.

"Two of the buildings are condominiums; one is 30 stories overlooking the river, and the other consists of a 15-story building overlooking the park," explains Jeff Levine, Chairman of Douglaston Development. This first phase of construction also includes two smaller buildings for rentals, which will all be available for occupancy in Fall 2009. A separate, 40-story tower is slated to open in 2010.

Besides the acres of parkland, families can take advantage of 60,000 square feet of retail space, along with 40,000 square feet of indoor and outdoor ameni-



Developer: Douglaston Development | Architect: Stephen B. Jacobs Group | Sales and Marketing: The Developers Group | Prices: Studios start at \$400,000. Penthouses from \$1.8 million to \$3 million | Address: North 6th Street at Kent Avenue | Phone Number: 718-222-0211 | Web site: [www.williamsburgedge.com](http://www.williamsburgedge.com)